

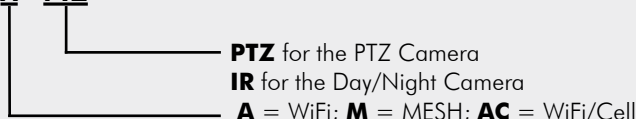
Part Number Scheme

Ordering Examples:

PNSC-A-PTZ
for the WiFi PTZ Camera (NTSC)

PNSC-M-PTZ
for the MESH PTZ (NTSC)

PNSC - A - PTZ



Options

BAT-7C: Spare Internal Battery

A second battery allows one battery to be charging while the other is operating the PNSC. Supplied in hard carry case.

System

System Components	Quick connect telescoping pole (raising camera to 6.5ft); Adjustable camera tilt/swivel bracket; Adjustable pole tilt/swivel bracket; Battery Charger; Whip antenna; 6ft antenna(s) cable; PC program; Case with integrated battery, electronics and wireless transmitter;		
Case Size	22" x 15" x 8" (56cm x 38cm x 20cm); Waterproof when closed	Weight	46 lbs (21kg)
PNSCs Per Network	Up to 6; Performance depends upon wireless signal strength	Temperature Range	-20°C to +50°C

Cameras

PNSC Model	PTZ	IR
Type	PTZ (Pan/Tilt/Zoom) day (color) / night (BW); Automatically switches to night mode at dusk or day mode at dawn	Day (color) / night (BW); Automatically switches to night mode at dusk or day mode at dawn
Remote Pan	360° continuous pan, adjustable speed	None
Remote Tilt	-45° to +90° (digital flip)	None
Lens	2.8°- 48° FOV (18X optical zoom)	16°-36° FOV (Manually adjustable)
Resolution	768 x 494 (NTSC)	
Lux	.7 color; .01 BW	.004 color; .0001 BW
Illumination Type	850nm (slight glow); 940nm (invisible) - available upon request	850nm (slight glow)
Illumination Angle	30°	60°
Illumination Range	200ft (60M)@850nm; 100ft (30M)@940nm	150ft (45m)
WiFi		MESH
Frequency/Power	PNSC to PNSC: 2.4GHz (2.412-2.462), 802.11b/g, 1000mw PNSC to Laptop: 2.4GHz (2.412-2.462), 802.11b/g, 1000mw	PNSC to PNSC: 5GHz (5.745-5.805), 500mw PNSC to Laptop: 2.4GHz (2.412-2.462), 802.11b/g, 316mw
Antenna	8" omni-directional 2.4GHz whip antenna and 6ft antenna cable supplied. Antenna can be mounted directly to the case or on the pole.	8" omni-directional 2.4GHz whip antenna, 16" omni-directional 5GHz whip antenna and 6ft 5GHz antenna cable supplied. The 5GHz is pole mounted and the 2.4GHz is case mounted.
Range	1500ft+ (450M+) line-of-sight PNSC to PNSC. 500ft (150M+) line-of-sight PNSC to laptop.*	1000ft+ (300M+) line of sight PNSC to PNSC. 500ft (150M+) line-of-sight PNSC to laptop.*

* Range is dependent upon antenna height and environment. Laptop range is dependent on laptop radio.

Cellular Option

Carrier Requirements	Available with WiFi model only; Supports 3G and 4G; Carrier must be specified (Verizon, Sprint or AT&T) at time of order; The carrier must provide a fixed IP address; Activations fees, contracts and usage fees apply – consult your selected carrier
-----------------------------	---

External Connectors

Camera Input	12-position metal waterproof connector for coil cord to camera and illuminator
DC Output	3-position metal waterproof connector with both unregulated and regulated 12V DC; Unregulated 12V battery voltage output (10V-15V) at 2A max; Regulated 12V at 1A max.
A/V Connector	6 position metal waterproof connector for video out, microphone in and speaker out. Can be configured at factory to have line level audio input and output in place of the microphone in and speaker out
Antenna Connector	N-type female with tethered cap
Network	Waterproof RJ45 for a hard-wired CAT5 cable connection with tethered cap when not in use; Usage requires operating an internal switch, which disables wireless operation (WiFi version only)

PC Monitoring Station

Battery

PC Reqs.	Not supplied; See requirements on previous page	Type	12V Lead-acid, 20Ah	Charge Time	6 hours
Application Program	Supplied with each PNSC; Allows the system setup and configuration; Can view all cameras independently or simultaneously; Reports alarm conditions rec'd by PNSCs	Power Input for Charging	60W; 90-264VAC; (For international use, order the power cord adapter separately at no charge; part number PCA-XX, where XX is the country code.)		
Alarm Conditions Reported	(1) Programmable motion detector for each camera; (2) Low battery condition	Run Time	Run time in hours with illumination off/on: WiFi IR: 21/11; MESH IR: 15/9 WiFi PTZ: 15/12; MESH PTZ: 11/9		

EXPANDING YOUR VISION



ZISTOS[®]
PORTABLE VIDEO SYSTEMS

**Now Available with MESH
& Cellular Technology**



Portable Network Surveillance Camera Instantly set-up wireless IP-based video surveillance.

CELLULAR OPTION ALLOWS FOR WORLDWIDE ACCESS

The Portable Network Surveillance Camera (PNSC) is a self-contained, battery-operated, wireless network camera in a single, rugged carry case. The compact case with built-in wheels and handle make the PNSC easy to transport and deploy.

The PNSC includes an internal rechargeable battery, a telescoping pole, two adjustable tilt/swivel brackets, and a remote-controlled, infrared illuminated PTZ (Pan/Tilt/Zoom) day/night camera. The camera attaches to the telescoping pole, which raises the camera up to 78" high and mounts securely to the case. All items conveniently store within the case.



PNSC-A-PTZ model

Pan Tilt Zoom (PTZ) Camera*

The PTZ camera allows the operator to pan 360° continuously, tilt from -45° to +90° and adjust the field-of-view from 2.8° to 48° (18X optical zoom).

The PTZ camera provides invisible IR illumination for covert surveillance in dark surroundings. At low ambient light levels, the camera automatically switches to BW mode with the infrared illuminator on. At higher ambient light levels, the camera automatically switches to color mode with the infrared illuminator off.

Wireless Operation

The PNSC transmits video on a wireless network, either connecting to an existing structured network or creating its own standalone network. The video can be viewed and recorded by a PC connected to this network running the supplied application program. Video can also be viewed on a smartphone or tablet. The PNSC can be programmed to generate motion alarm events based on changes in video image content.

The PNSC is available with either a 5GHz mesh connection between PNSCs or with standard 2.4GHz Wi-Fi connection between PNSCs. The mesh version is far more robust for two reasons – the mesh architecture is self-configuring/self-healing and the 5GHz frequency is able to better penetrate structures/obstructions.

Cellular Option

The WiFi model also supports an optional cellular uplink. As long as there is cellular service at the PNSC site, the PNSC cellular uplink option streams video through the cell network to any location in the world with an internet connection. This remote location can then view real time video and control the PTZ camera using either a laptop or smart phone.

Applications

- Perimeter surveillance around a mobile asset/terrorist target
- Tactical surveillance
- Surveillance for sting operations: warehouses, loading docks, depots
- Border security/VIP security
- Construction site safety and security
- Video for disaster management scenarios
- Event security for large and small venues

Features & Benefits

- Cost-effective solution
- No external power or wires required
- Easy to transport and deploy – sets up in 5 minutes!
- Rugged, weatherproof design
- Viewable on a PC or Laptop/Records video on PC
- Can support up to 6 PNSCs per network
- Rechargeable battery
- Motion alarm capable
- Supports audio with addition of microphone
- Can be hard-wired to a network, if desired
- Compatible/expandable with Zistos Universal WiFi Link (UWL)
- Available with either a WiFi or MESH network
- Wifi version also available with a cell modem option

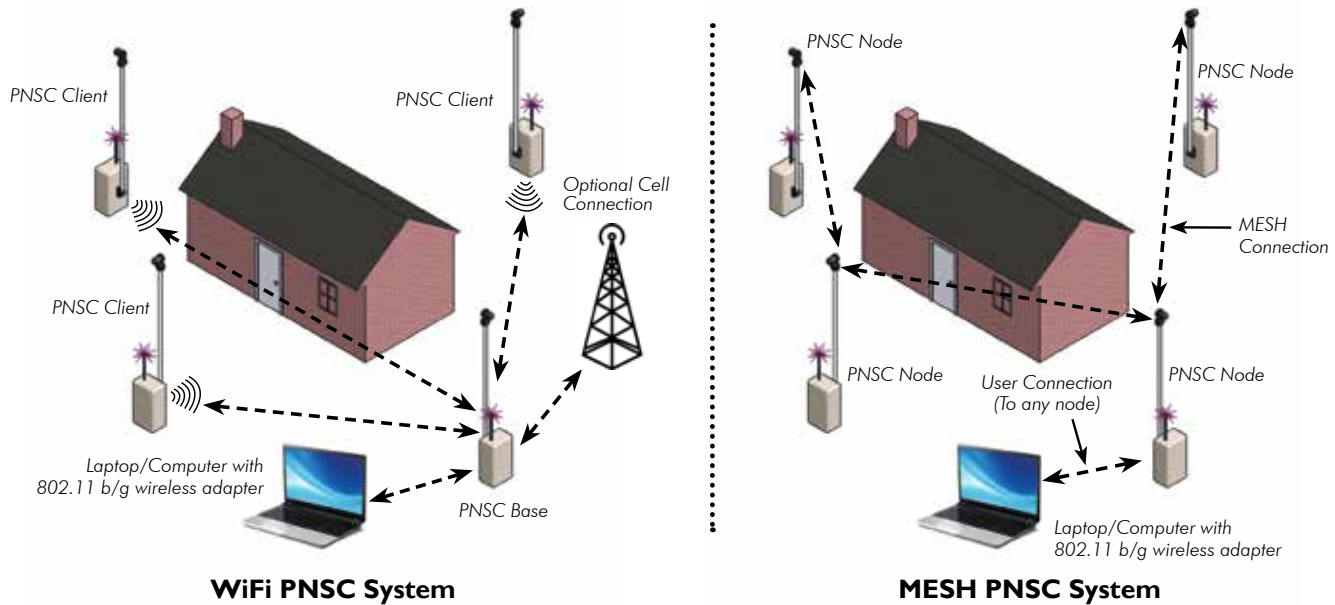


PNSC-A-IR
model

*Also available with a lower cost infrared illuminated, day/night camera with a manually adjustable FOV of 16 - 36°.

System Architecture

The wireless operation of the Mesh PNSC system is far more robust than the standard WiFi PNSC system. In the standard PNSC system, all client PNSCs must connect directly to the PNSC base and only the PNSC can connect to the laptop. In a Mesh PNSC system, the PNSCs can connect to each other dynamically to obtain the best connection possible and the laptop can connect to any PNSC.



PNSC Network Viewing & Recording Program

The software, supplied with each system, enables the user to customize the view, record video, set alarms and control the PTZ camera of each PNSC.

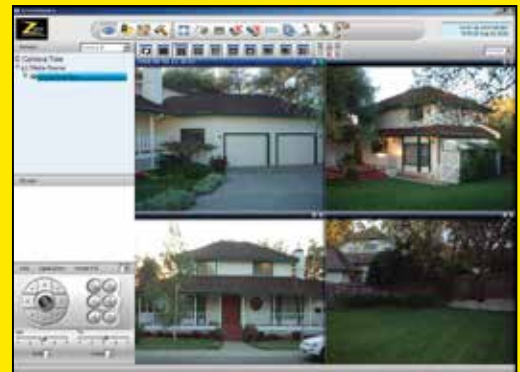


Laptops available for purchase.

Computer requirements:

Intel core 2 Duo 2.4GHz or faster, at least 2GB of RAM, Video card with NVidia 7600 chipset or newer with at least 256MB of RAM, 801.11 b/g wireless network adapter.

Operating system supported: Windows 7 only.



Screen shot of quad view from PNSC.

Optional Equipment

(Refer to individual spec sheets for more information)

PNSC Long Range Link Kit (PNSC-LINK): Inserts a 5.8 Ghz long range link (up to one mile) between the PNSC network base station and a remote monitoring station, such as a command vehicle.

PNSC Range Expansion Kit (PNSC-RCVR): Extends the range of the remote command station (laptop) by using a high power 2.4GHz outdoor pole-mounted radio/antenna in place of the laptop's low power internal radio/antenna.

PNSC Remote Antenna Kit (PNSC-M-RA13 or PNSC-A-RA13): Allows for placement of the antenna(s) up to 13ft high to maximize range of any PNSC.